

Recessed luminaire - Opal diffuser - direct distribution

Suitable for ceilings with visible T-bars; flat aluminium frame, powered white; steel plate housing; Housing colour traffic white RAL 9016; LED backlight technology; direct light distribution using opal PMMA diffuser and single lenses. Including a multi-lumen driver with 4 settable light outputs; Flicker < 5%; Flexible 40cm long connecting cable wired to the luminaire via a plug system ready for operation. Protection rating: IP20/IP40 (room) Accessories: please order the installation frame 60110003100 for installation in cut-out ceilings, the frame 60110005100 for ceiling surface-mounting and feed-through wiring box DV-BOX ET for convenient connection to the control gear separately. Further operating data can be found in the operating instructions.

CHARACTERISTICS

| | |
|-------------------------------|---|
| Order number | 60114034110 |
| EAN number | 4020863422289 |
| Commodity code | 94051190 |
| Certification mark | IP 40/20, Protection class II, F, Indoor, CE |
| Impact resistance (IK rating) | IK02 (-10°C bis 35°C) |
| Ambient temperatur | ta -10°C to 35°C |
| Warranty period | 5 years |
| State funding programs | BEG - Federal funding for efficient buildings (valid only for Germany) |

ELECTRICAL ENGINEERING

| | |
|--------------------------------------|--|
| Controller | Electronic multi-lumen driver, 4-steps (1 pcs.) |
| System output | 39W-30W |
| Mains voltage | 230V/50Hz |
| Energy efficiency class/light source | C |

LIGHTING TECHNOLOGY

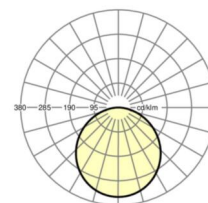
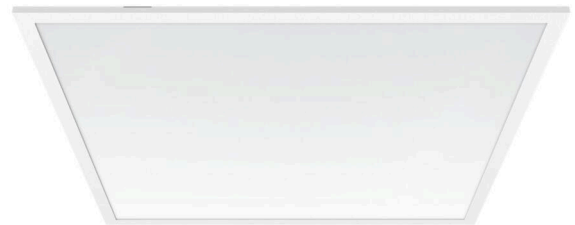
| | |
|---|---|
| Placement | LED, Colour rendering/Light colour CRI ≥ 80 / 4000K |
| Colour tolerance (MacAdam) | 3SDCM |
| Nominal luminous flux/switching steps (EDM) | 5100lm/39W, 4700lm/36W, 4500lm/34W, 4100lm/30W (Standard setting 4400lm) |
| LED service life | 50000h L80/B10 (Tq 35°C/do not cover with insulation wool) |
| Luminaire luminous efficiency | 135lm/W-130lm/W |
| UGR lat./long. | 22.1 / 22.1 (39W) |

MECHANICS

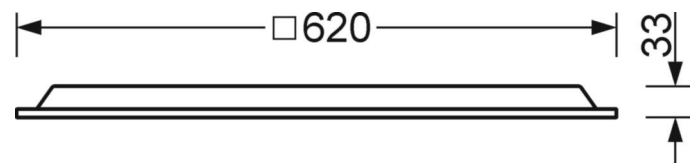
| | |
|-------------------------|--|
| Housing colour | traffic white RAL 9016 |
| Dimensions (LxWxH/DxH) | 620mm x 620mm x 33mm |
| Depth | 33mm |
| Ceiling system | Ceilings with visible T-rails [s-TS] (625x625 mm), cut-out ceilings [AD] |
| Ceiling cut-out (LxW/D) | 648mm x 648mm (when using accessory mounting frame) |
| Installation depth | 145mm [AD]; 145mm [s-TS]; 115mm [s-TS] min |
| Weight (net) | 2.05kg |
| Type of installation | Recessed mounting, Ceiling installation individual mounting, Ceiling-mounted single installation |

DEEP-LINK

<https://www.regiolum.de/en/article/60114034110>



| | |
|------------------------------|--------------------|
| Reference | LED 5100lm/39W 840 |
| η_{LB} | 100 % |
| $\Phi_{\downarrow/\uparrow}$ | 100 % / 0 % |
| UGR lat./long. | 22.1 / 22.1 |



Dimensions

| | | |
|-----------------|--------|---|
| L | 620 mm | Length |
| B | 620 mm | Width |
| H | 33 mm | Height |
| T | 33 mm | Depth |
| DA(L) | 648 mm | Cutting dimension length |
| DA(B) | 648 mm | Cutting dimension width |
| Et(min) | 115 mm | Ceiling distance minimum - minimum dimension (visible T-rail) |
| Et(AD) | 145 mm | Ceiling distance minimum (cut-out ceiling) |
| Et(TS) | 145 mm | Ceiling distance minimum - recommended (visible T-rail) |
| MLTS1 | 625 mm | Module dimension length (visible T-rail) |
| MLTS_1/2 | 625 | Module dimension length (visible T-rail) 1/2 |
| MBTS1 | 625 mm | Module dimension width (visible T-rail) |
| MBTS_1/2 | 625 | Module dimension width (visible T-rail) 1/2 |
| KL | 144 mm | Length luminaire head or box for ballasts |
| KB | 42 mm | Width luminaire head or box for ballasts |
| KH | 29 mm | Height luminaire head or box for ballasts |

